

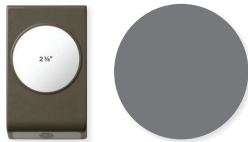


CARD MAKING SUPPLY LIST

During our virtual event on 7 October, we'll use the following supplies to make three different cards. Having these supplies on hand will make it easier for you to craft along with us. However, you're welcome to substitute any of these items as you like.

See something that you don't have but want to add to your collection? Contact your demonstrator or visit stampinup.nz to learn more about these products and place your order!

CIRCLE SAYINGS



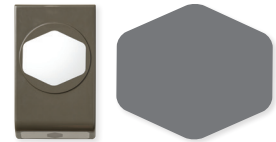
CIRCLE SAYINGS BUNDLE • 161355

EARTHEN TEXTURES



EARTHEN TEXTURES BUNDLE • 161514

HEARTFELT HEXAGON



HEARTFELT HEXAGON BUNDLE • 162889

PAPERS:

- 2023 New Core Colors Cardstock • 161702
- Basic White Cardstock • 159276
- Fluid 100 Watercolor Paper • 149612

INKS:

- 2023 New Core Colors Stampin' Write Markers • 161694
- Blueberry Bushel Classic Stampin' Pad • 147138
- Lemon Lime Twist Classic Stampin' Pad • 147145

EMBELLISHMENTS:

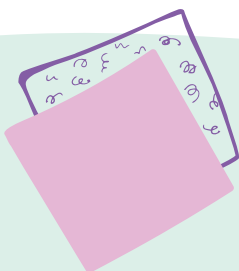
- Tinsel Gems Four Pack • 161623

TOOLS:

- Stampin' Cut & Emboss Machine • 149653
- or Mini Stampin' Cut & Emboss Machine • 150673
- Water Painters • 151298

ADHESIVES:

- Multipurpose Liquid Glue • 110755
- Stampin' Dimensionals • 104430
- Stampin' Seal • 152813





CARD MEASUREMENTS

Get ready for the event by cutting cardstock for each project.

CARD 3 – CIRCLE SAYINGS

Azure Afternoon Cardstock
Basic White Cardstock
Lemon Lolly Cardstock
Lemon Lolly Cardstock

IMPERIAL

1" x 5-1/2"
3" x 3"
3" x 3"
8-1/2" x 5-1/2" (fold at 4-1/4")

METRIC

2.5 x 14 cm
7.6 x 7.6 cm
7.6 x 7.6 cm
21 x 14.9 cm (fold at 10.5 cm)

CARD 1 – EARTHEN TEXTURES

Blueberry Bushel Cardstock
Fluid 100 Watercolor Paper

IMPERIAL

8-1/2" x 5-1/2" (fold at 4-1/4")
1 sheet: 5" x 7"

METRIC

21 x 14.9 cm (fold at 10.5 cm)
1 sheet: 12.7 x 17.8 cm

CARD 2 – HEARTFELT HEXAGON

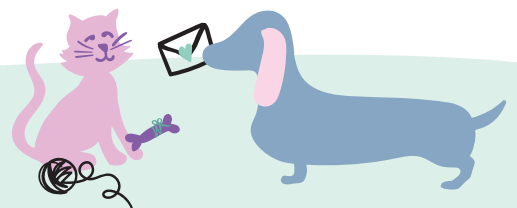
Azure Afternoon Cardstock
Basic White Cardstock
Basic White Cardstock
Basic White Cardstock
Berry Burst Cardstock
Bubble Bath Cardstock
Lemon Lime Twist Cardstock
Lemon Lolly Cardstock

IMPERIAL

1-1/2" x 3"
8-1/2" x 5-1/2" (fold at 4-1/4")
2-1/4" x 2-1/4"
2-1/4" x 6"
1-1/2" x 3"
1/4" x 3"
1-1/2" x 3"
1/4" x 3"

METRIC

3.8 x 7.6 cm
21 x 14.9 cm (fold at 10.5 cm)
5.7 x 5.7 cm
6.4 x 15.2 cm
3.8 x 7.6 cm
0.6 x 7.6 cm
3.8 x 7.6 cm
0.6 x 7.6 cm





Circle Sayings

1. Draw lines on the square piece of Lemon Lolly Cardstock using the Lemon Lolly Stampin' Write Marker (brush tip), then punch two half circles.
2. Stamp the sentiment in Blueberry Bushel ink on the square piece of Basic White Cardstock, then punch (you do not need the full circle).
3. Score the piece of Azure Afternoon Cardstock at 1" (2.5 cm), 1-1/2" (3.8 cm), 4" (10.2 cm), and 4-1/2" (11.4 cm). In the centre, stamp the sentiment in Blueberry Bushel ink.
4. Fold the sides underneath (following the scoring). Trim the ends to create the flagged edge. Glue the folded sides to secure them.
5. Fold the card base and adhere all pieces as shown. Use Stampin' Dimensionals behind the banner and white half circle pieces.
6. Add Lemon Lime Twist embellishments.





Earthen Textures

1. On a sheet of Watercolor Paper, stamp the vase image twice and the sentiment image once in Blueberry Bushel ink. Then stamp the foliage image in Lemon Lime Twist ink.
2. Die cut all the stamped images. Use the vase die to cut out the sentiment. Also die cut the fan piece from the same sheet.
3. Use the medium tip Water Painter to blend the ink on the vase pieces. Set aside to dry.
4. Scribble some ink from the Pecan Pie Stampin' Write Marker onto a clear block. Use the Water Painter to pick up the ink and colour the foliage piece.
5. Colour the fan piece with Lemon Lime Twist ink.
6. Scribble some ink from the Lost Lagoon Stampin' Write Marker onto a clear block. Use the Water Painter to pick up the ink and colour the fan piece.
7. Fold the card base and adhere the pieces as shown.
8. Add Blueberry Bushel embellishments.





Heartfelt Hexagon

1. Try a new partial punch technique: insert the square piece of Basic White Cardstock through the outside window of the punch. Push all the way down so that only the bottom of the cardstock piece is punched. Stamp the sentiment in Blueberry Bushel ink.
2. Punch out two full hexagons from Basic White Cardstock. Punch out three half hexagons (horizontal) from Lemon Lime Twist, Azure Afternoon, and Berry Burst Cardstock.
3. Stamp the dotted outline image and five small flowers in Lemon Lime Twist ink on the Lemon Lime Twist punched piece.
4. Colour the dotted outline stamp with the Azure Afternoon Stampin' Write Marker and stamp on the Azure Afternoon punched piece. Repeat with the Berry Burst marker and punched piece.
5. Adhere the Berry Burst piece to a full Basic White punched piece. Adhere the strip of Bubble Bath cardstock. Adhere the Azure Afternoon piece to the other full Basic White punched piece. Adhere the strip of Lemon Lolly cardstock. Trim the edges.
6. Adhere the Lemon Lime Twist piece to the sentiment piece.
7. Fold card base and adhere all pieces as shown using Stampin' Dimensionals. Cut off any pieces that hang over the card front.
8. Add Berry Burst embellishments.

